

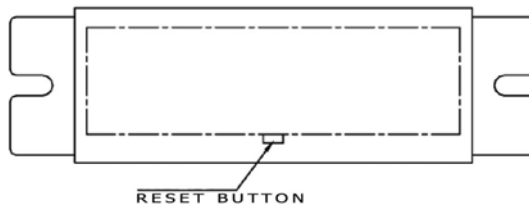
POS-X Xr500 Wireless Interface Install Guide

Self Test

- 1 Turn off the printer
- 2 Turn the printer back on while holding down the Feed Button. The printer will print out a diagnostics page
- 3 By default the Printer should have the following wireless settings:

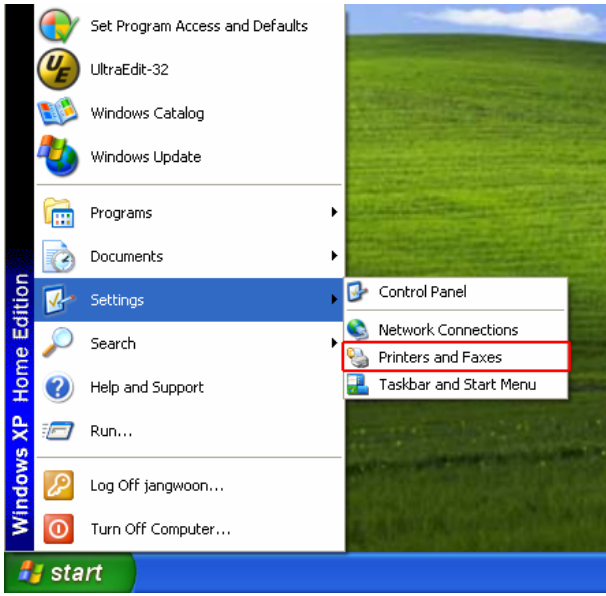
SSID	ADHOC
Network Mode	Ad-hoc
IP Address	192.168.0.168
Subnet Mask	255.255.255.0
Gateway	192.168.0.1

- 4 Reset the printer to its default settings turn off the printer. Turn the printer back on while holding the Reset Button in for 2-3 seconds. The printer has now been reset to its default settings. If at anytime an error is made during the following steps reset printer to defaults and start over.

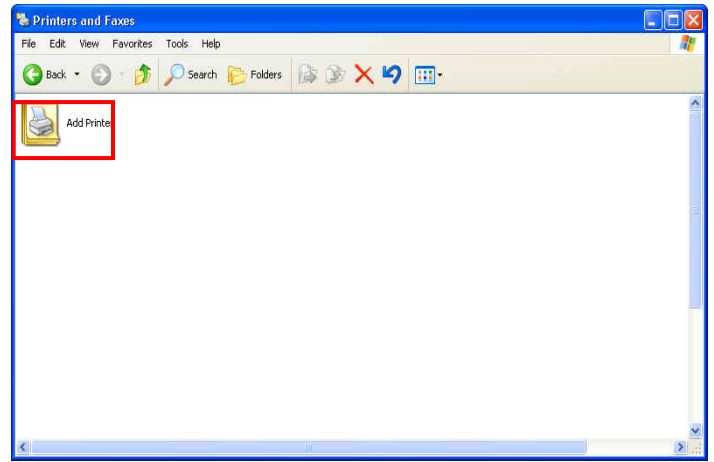


5. Please record the following wireless security settings off of your current wireless network.
 - A. SSID _____
 - B. Wireless Channel _____
 - C. Security Mode _____
 - D. WEP Encryption Type _____
 - E. Key # Transmitted _____
 - F. KEY _____
6. Once the above information has been recorded please change the SSID to **ADHOC** and turn off the Wireless Security.
7. Run the Xr500ethernet program.
 - A. Click on SEARCH BUTTON to detect the Xr500 (searching for the printer may have to be done more than once)
 - B. Change the Local IP, Subnet mask, and Gateway to reflect the network you want to have the printer on
 - C. Check the WLAN CFG button
 - D. Select the Infra Structure mode from the WLAN MODE drop down box
 - E. Select the Channel from step 5B
 - F. Input the SSID from step 5A
 - G. Select the Key from step 5F
 - H. Input the Key # in the appropriate box from step 5E
8. Click the SAVE button

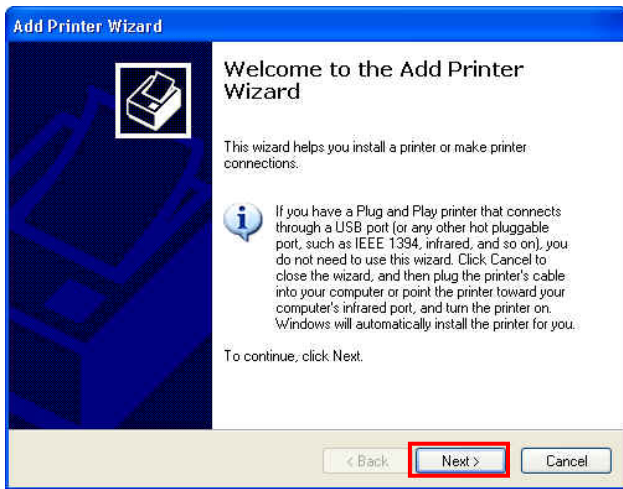
9. Go back and reset the settings on the wireless network from step 5 being sure to return the SSID and Wireless Encryption to their original settings.



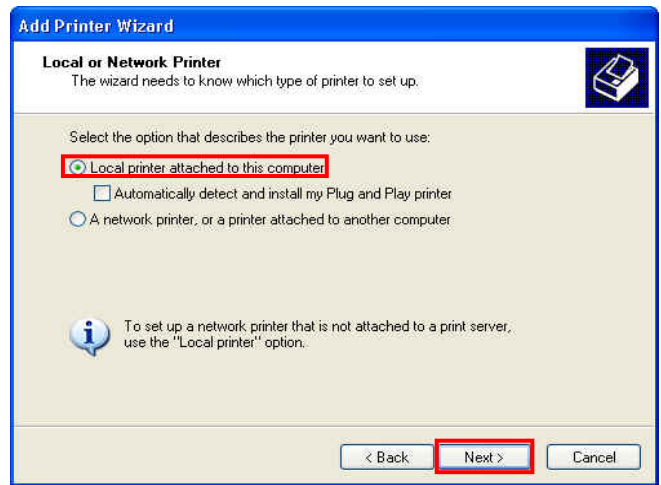
3 Click **PRINTERS AND FAXES** option. This can be found under **SETTINGS** it can also be found under **CONTROL PANEL**



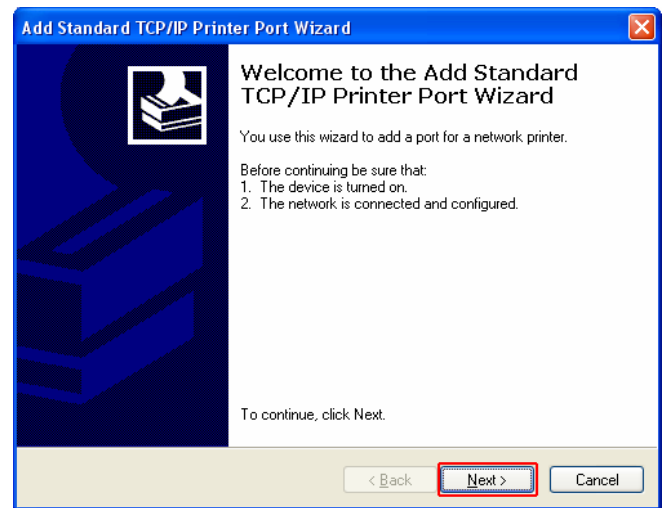
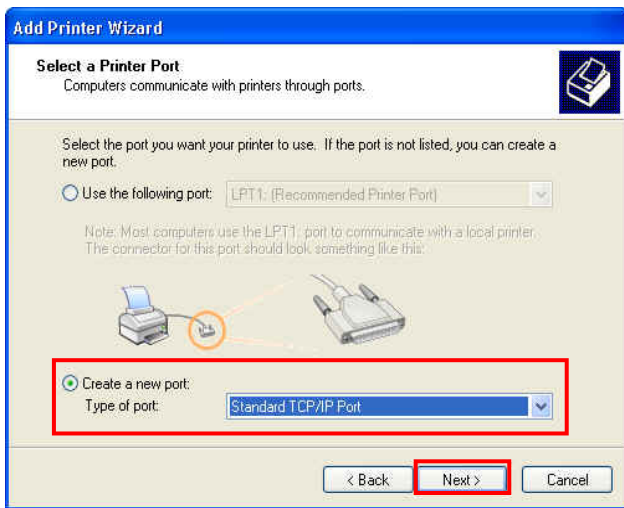
4 Click on the **ADD PRINTER** button.



5 Click on the **NEXT** button

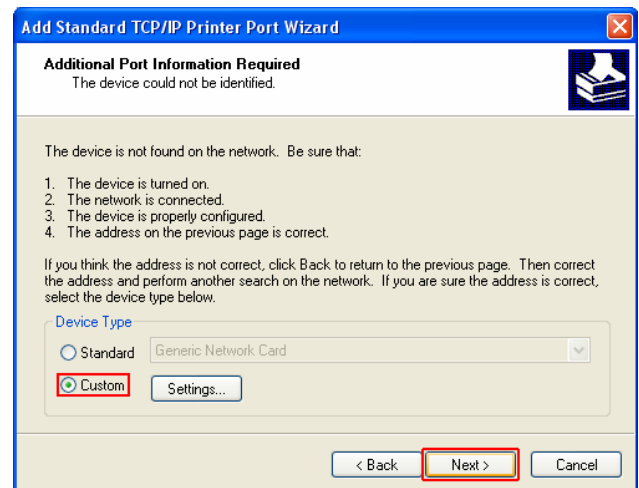
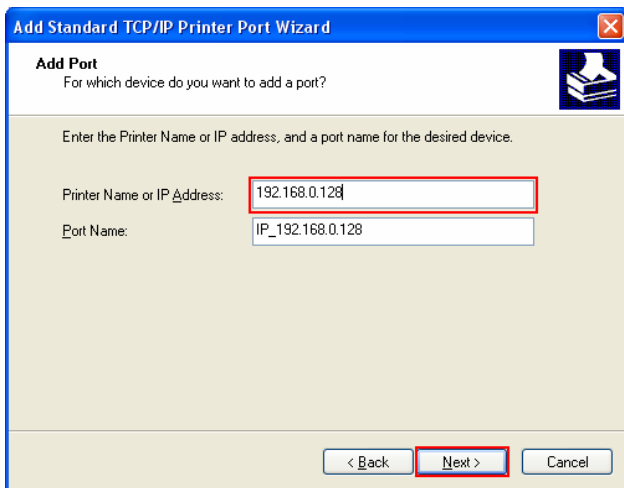


6 Select the **LOCAL PRINTER ATTACHED TO THE COMPUTER** option then click on **NEXT**



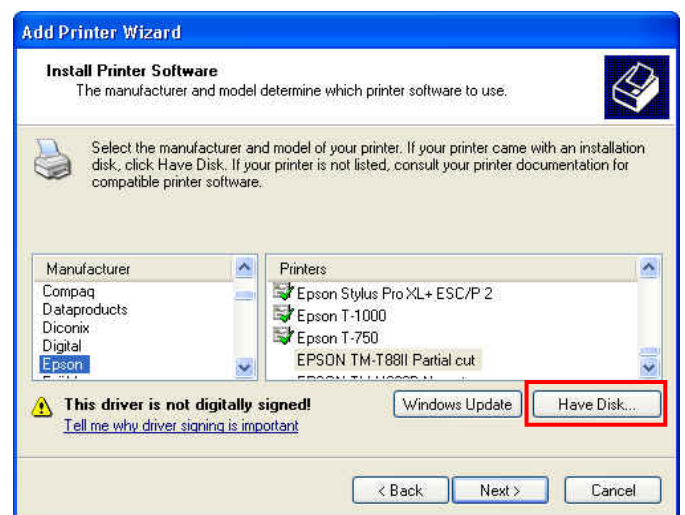
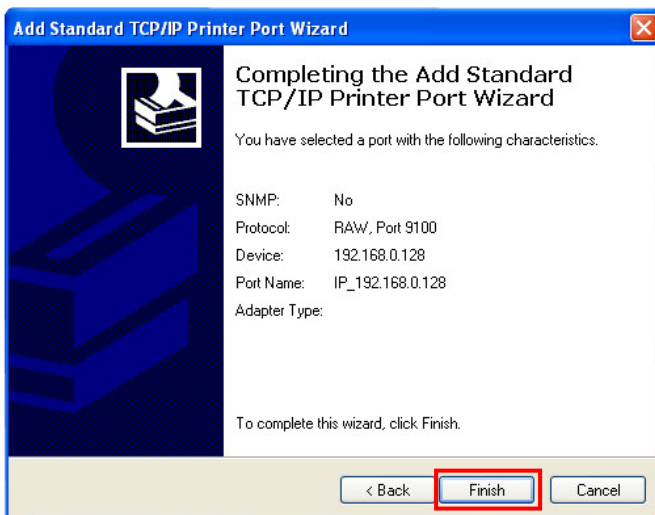
7 Click **CREATE A NEW PORT** and select the **STANDARD TCP/IP PORT**.

8 Click on the **NEXT** button.



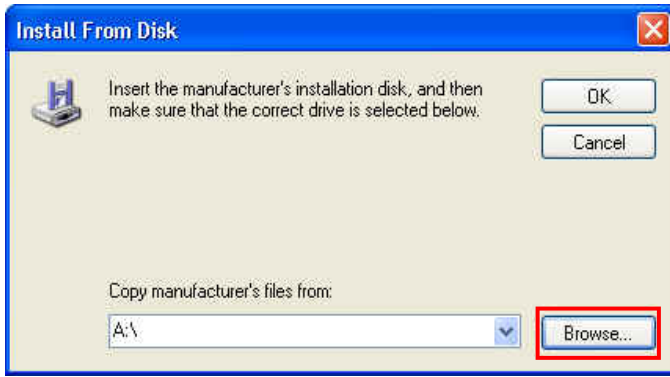
9 Fill in the IP address you assigned to your printer from step 7B. It will automatically fill in the **PORT NAME**. Then click **NEXT**

10 Select **CUSTOM** and click the **NEXT** button.

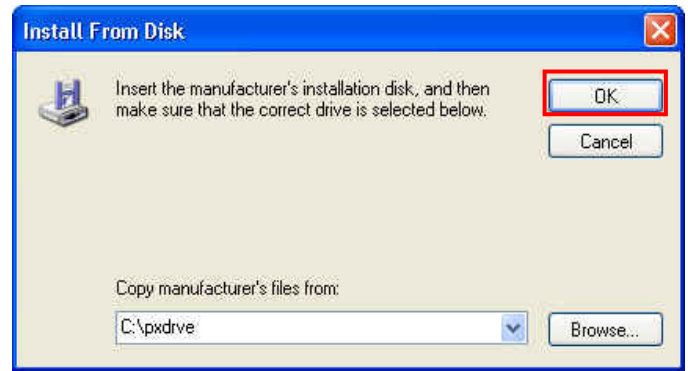


11 Click the **Finish** button.

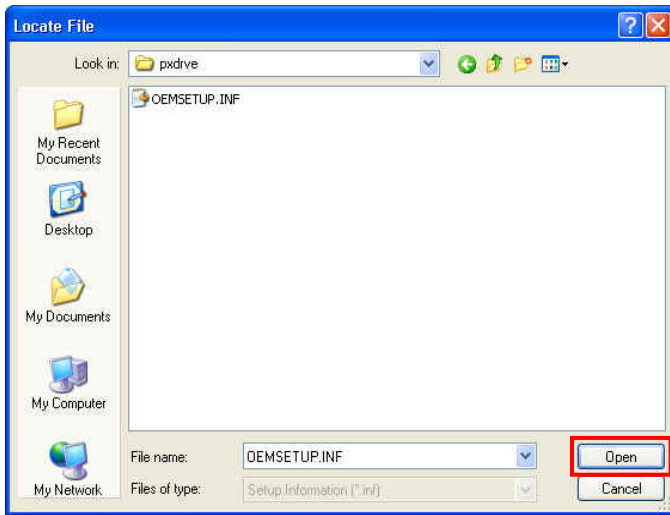
12 Click on the **HAVE DISK** button.



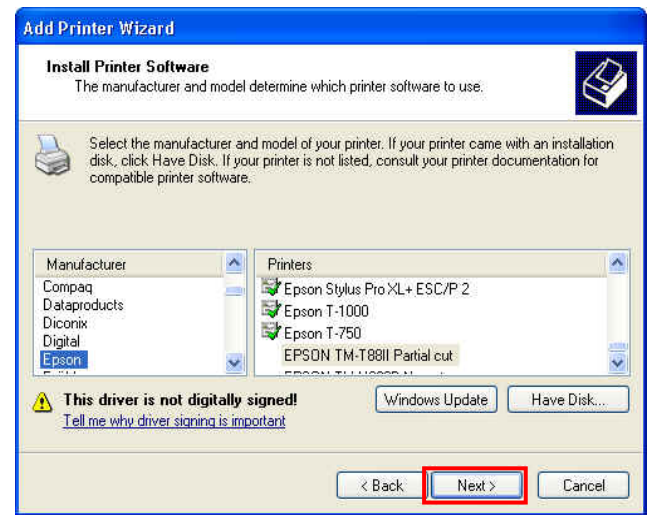
13 Click the **BROWSE** button.



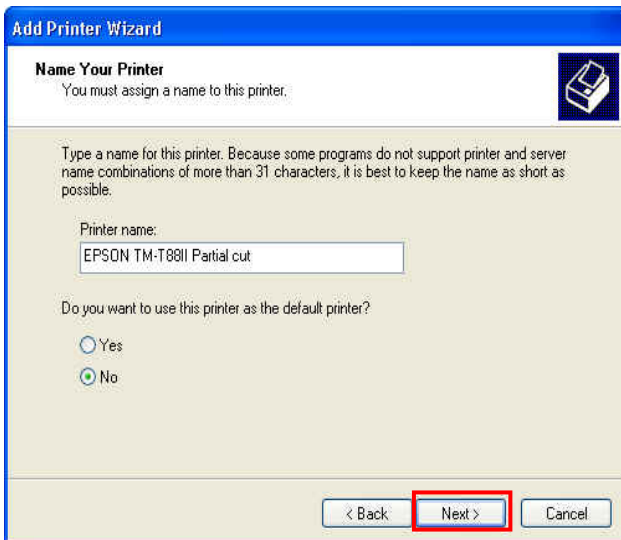
14 Browse to the appropriate location and click the **OK** button. (If you are not sure where your drivers are refer to driver installation documentation.)



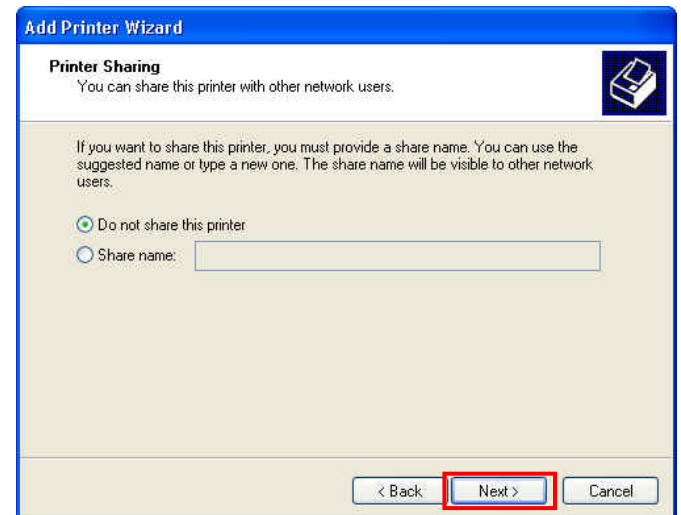
15 Select **OEMSETUP.INF** and click the **OPEN** button.



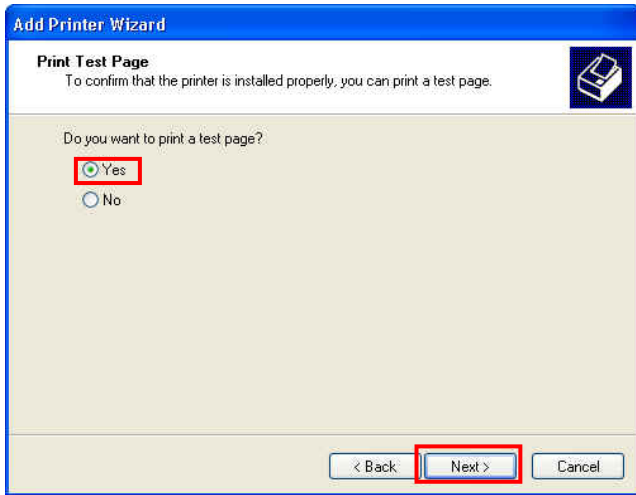
16 Select the **EPSON TM-T88II PARTIAL CUT** driver (due to its true Epson emulation we are using the Epson driver) and click the **NEXT** button.



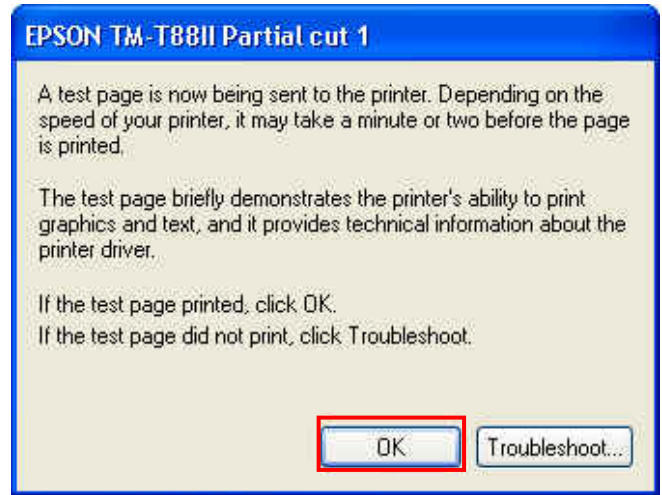
17 Select if you want this to be the default printer or not (this is user preference) and click the **NEXT** button.



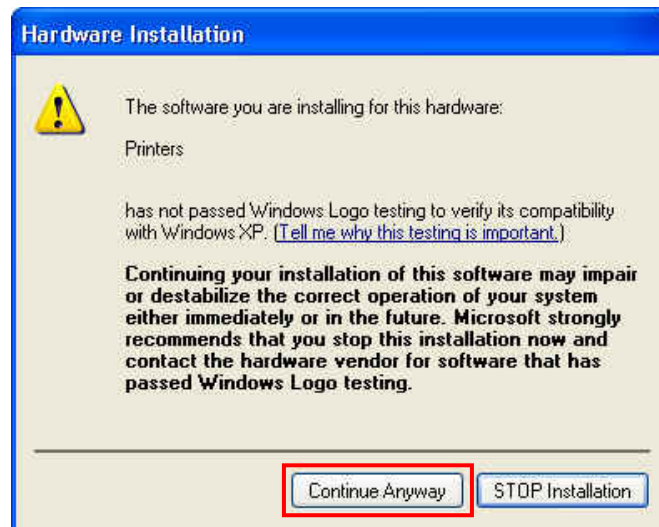
18 Select if you want to share the printer or not (once again user preference) then click the **NEXT** button.
* If Applicable



19 Select **YES** for printing a test page and click on the **NEXT** button.



20 Click the **OK** button.



21 Click on the **CONTINUE ANYWAY** button. A test page should now print.