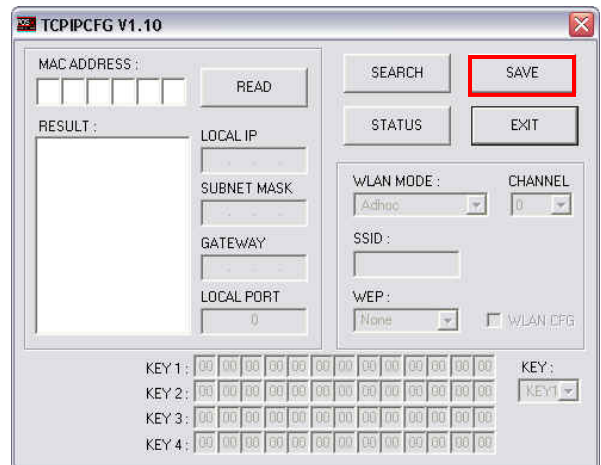
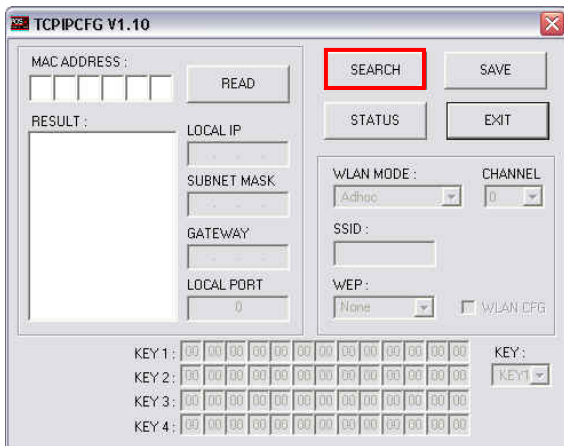
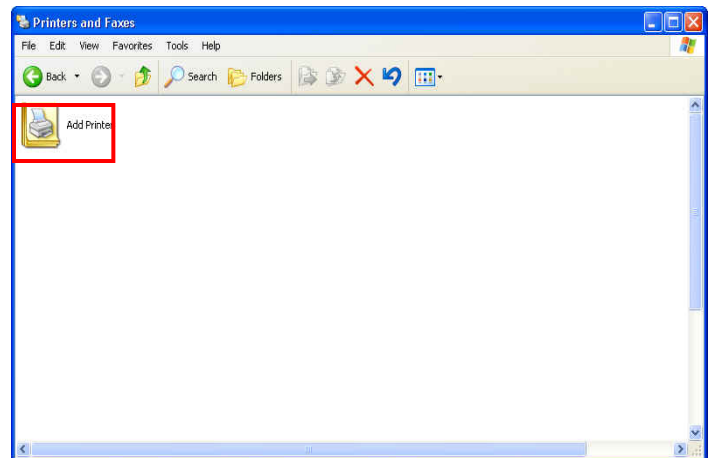
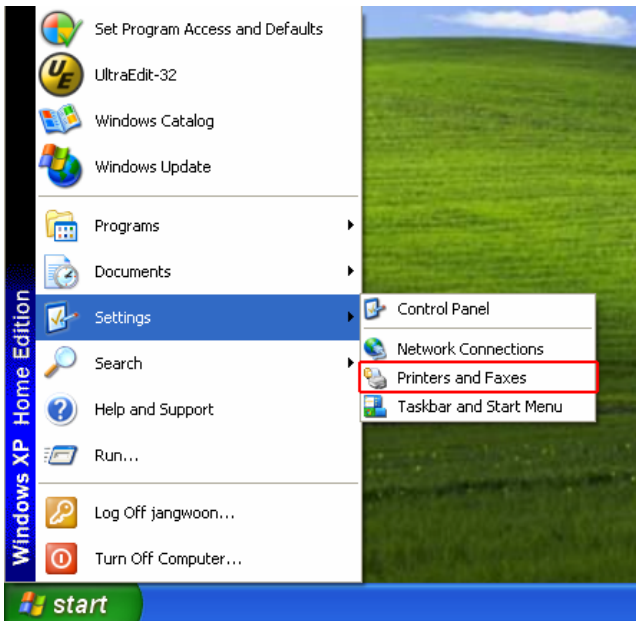


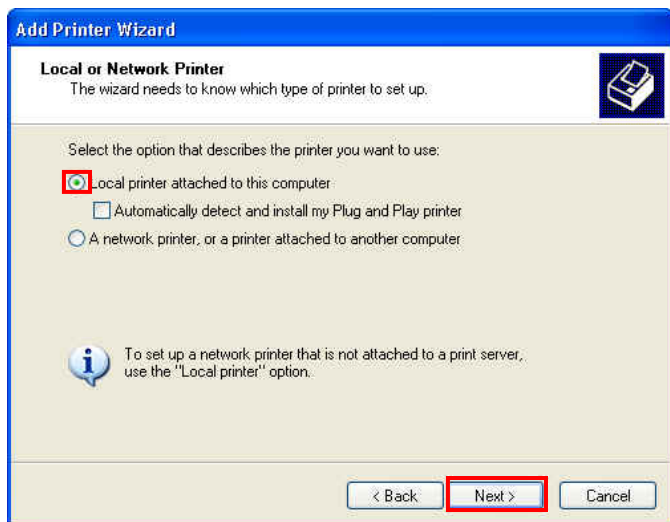
# POS-X Xr500 Ethernet Interface Install Guide



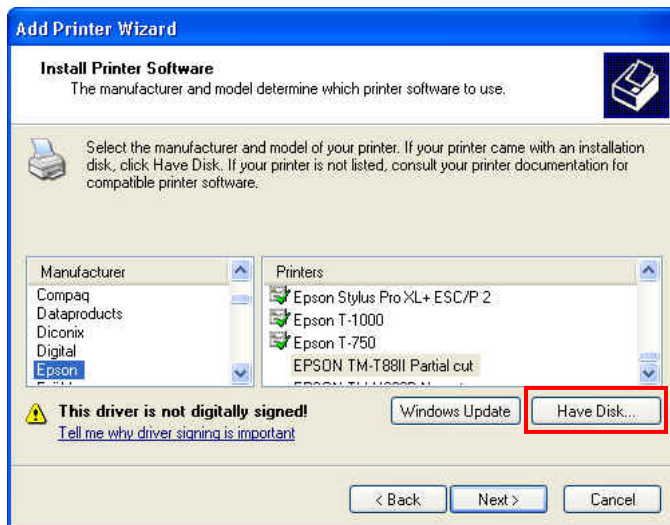
- 1 Start the **TCPIPCFG** program from the desktop shortcut. Make sure that your printer is hooked up to your network (this can be done with a direct connection to the PC using a crossover cable or through a regular network connection) and click on the search button. This will search for any printers on your network.
- 2 Once the program is done searching it will list all of the found printers. You will then be able to edit the **LOCAL IP ADDRESS, SUBNET MASK, and GATEWAY** to match your network requirements. Once you have made these changes click on the **SAVE** button this will save your settings to the printer.



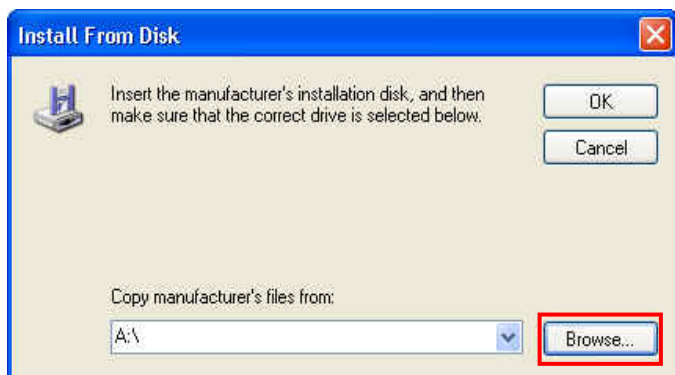
- 3 Click **PRINTERS AND FAXES** option. This can be found under **SETTINGS** it can also be found under **CONTROL PANEL**
- 4 Click on the **ADD PRINTER** button.



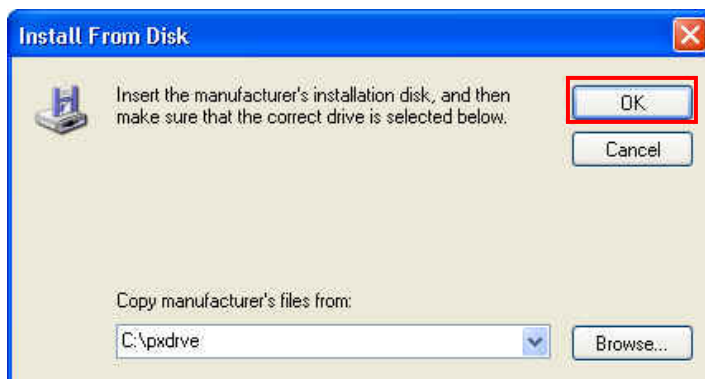
- 5 Select the **LOCAL PRINTER ATTACHED TO THIS COMPUTER** and click the **NEXT** button.



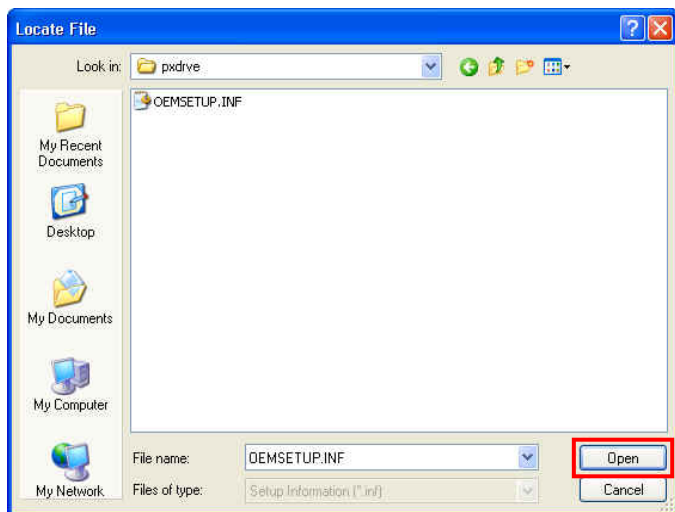
- 6 Click on the **HAVE DISK** button.



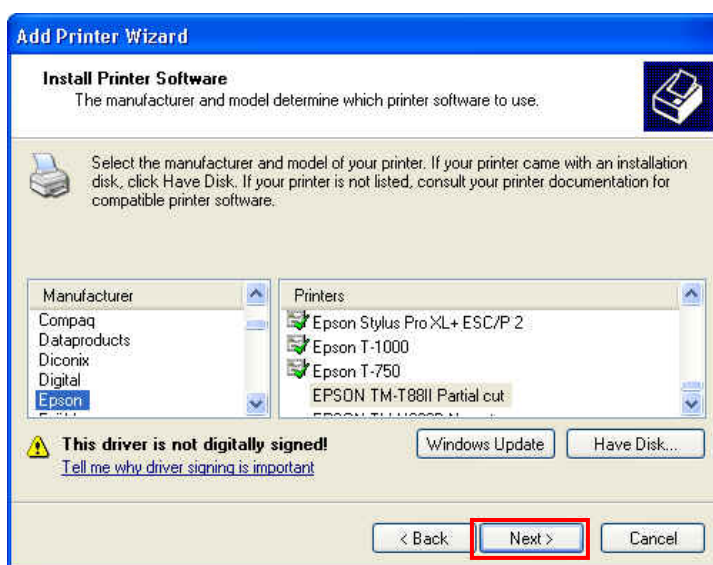
- 7 Click the **BROWSE** button.



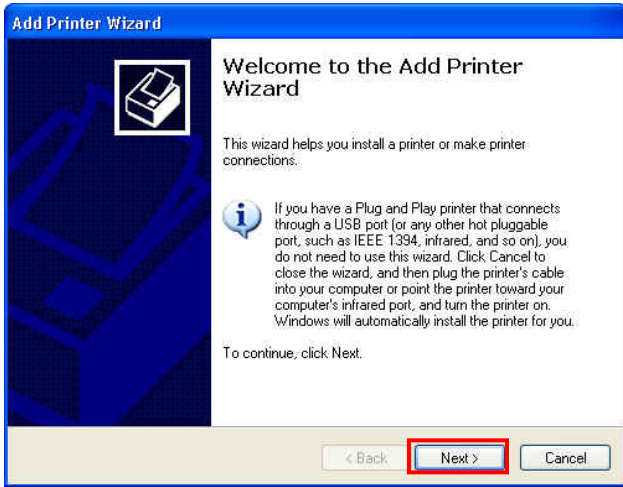
- 8 Browse to the appropriate location and click the **OK** button. (If you are not sure where your drivers are refer to driver installation documentation.)



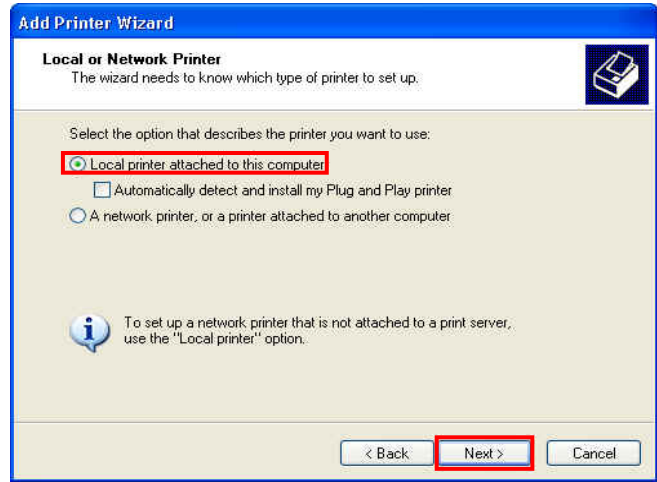
- 9 Select **OEMSETUP.INF** and click the **OPEN** button.



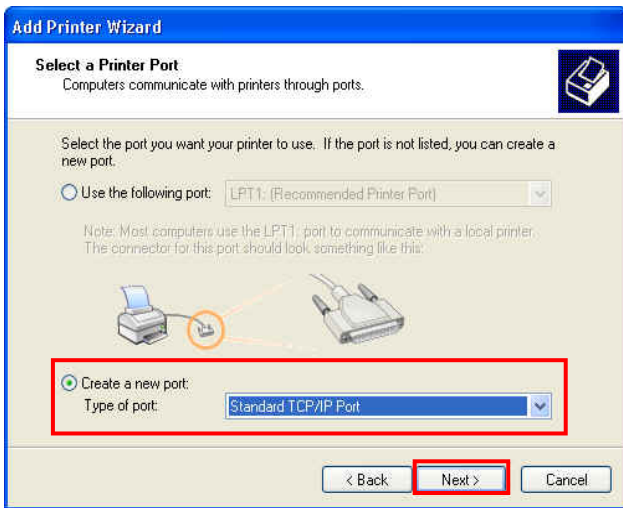
- 10 Select the **EPSON TM-T88II PARTIAL CUT** driver( due to its true Epson emulation we are using the Epson driver) and click the **NEXT** button.



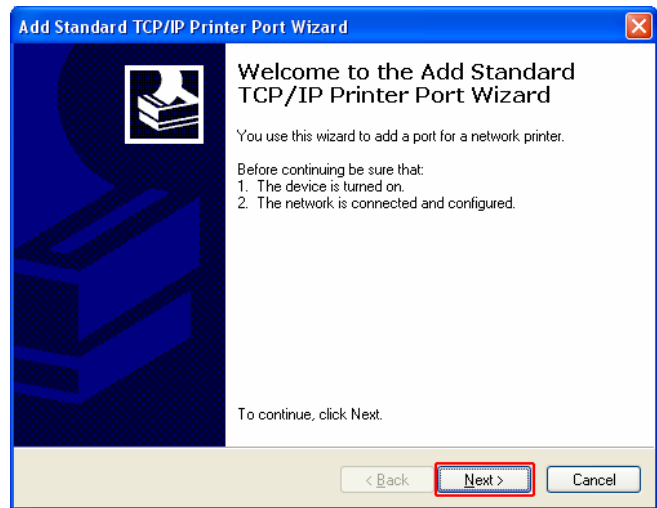
11 Click on the **NEXT** button



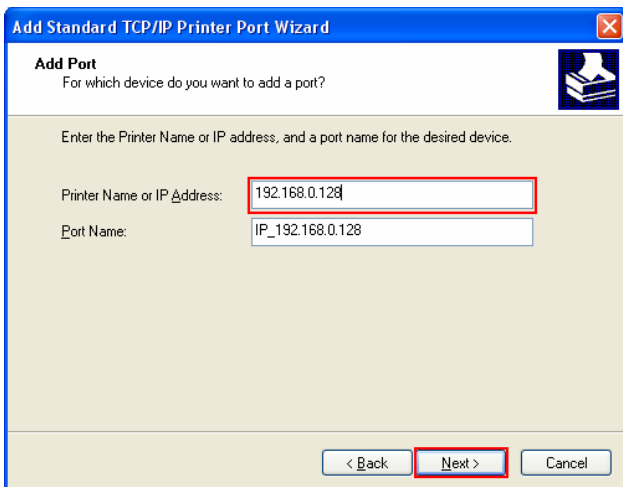
12 Select the **LOCAL PRINTER ATTACHED TO THE COMPUTER** option then click on **NEXT**



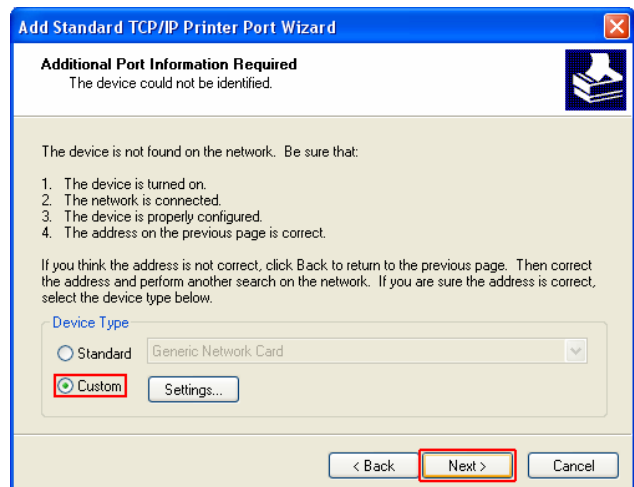
13 Click **CREATE A NEW PORT** and select the **STANDARD TCP/IP PORT**.



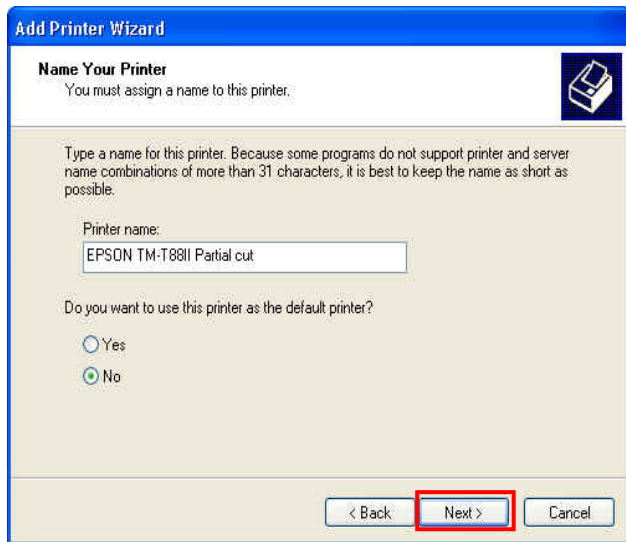
14 Click on the **NEXT** button.



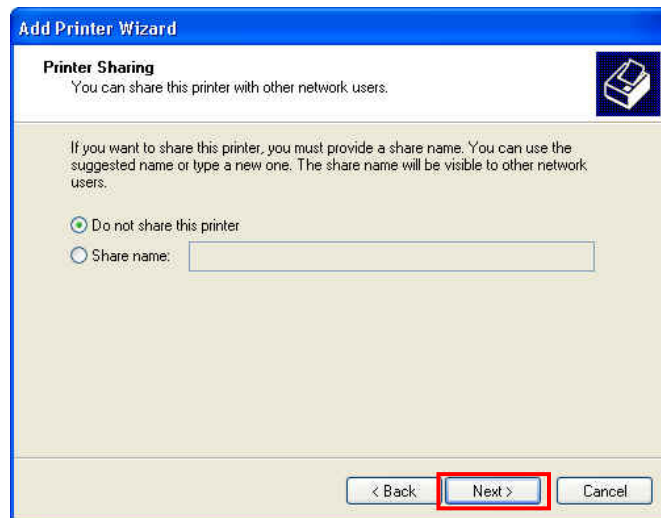
15 Fill in the IP address you assigned to your printer. It will automatically fill in the **PORT NAME**. Then click **NEXT**



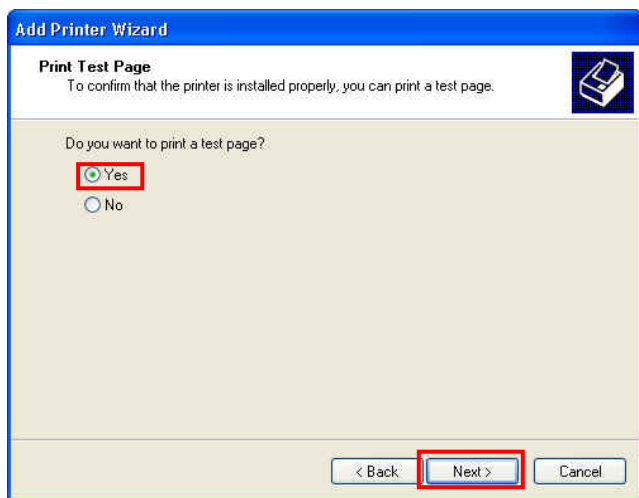
16 Select **CUSTOM** and click the **NEXT** button.



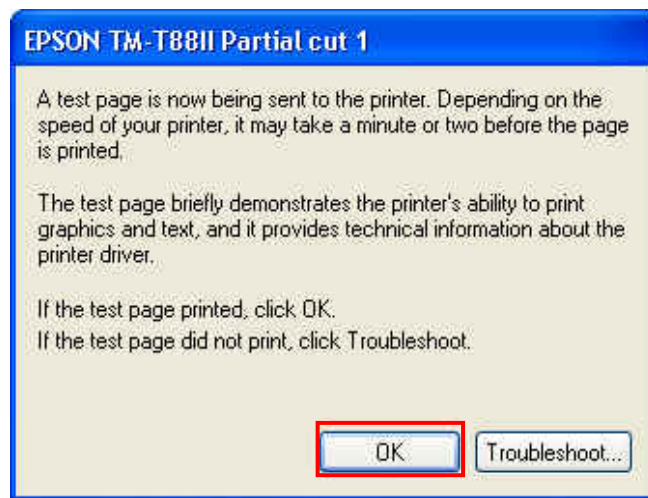
- 17 Select if you want this to be the default printer or not (this is user preference) and click the **NEXT**



- 18 Select if you want to share the printer or not (once again user preference) then click the **NEXT** button. \* If Applicable



- 19 Select **YES** for printing a test page and click on the **NEXT** button.



- 20 Click the **OK** button.



- 21 Click on the **CONTINUE ANYWAY** button. A test page should now print.